



YLI ELECTRONIC

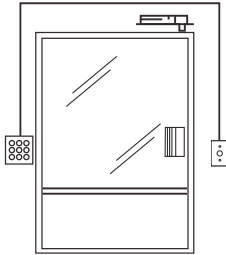
Zinc Alloy Box

Model: MBB-811D-M

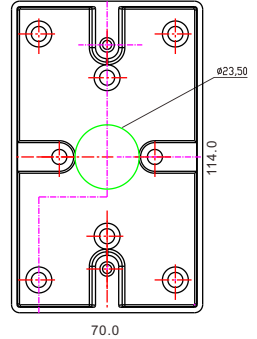
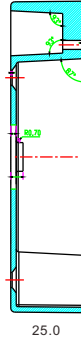


Parameter

- Dimensions: 114Lx70Wx25H(mm)
- Standard instruction: Zinc alloy material and surface is coated with chrome
- Adaption accessories: PBK-814D/818C/820D ISK-840D
- Weight: 0.2kg



Dimensions



www.yli.cn

We create security



YLI ELECTRONIC

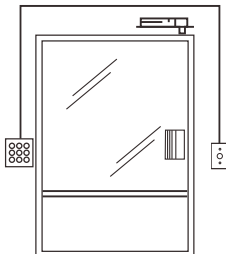
Zinc Alloy Box

Model: MBB-811D-M

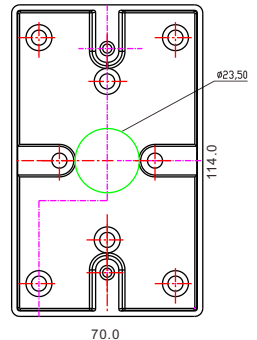
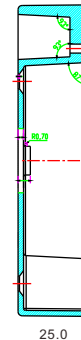


Parameter

- Dimensions: 114Lx70Wx25H(mm)
- Standard instruction: Zinc alloy material and surface is coated with chrome
- Adaption accessories: PBK-814D/818C/820D ISK-840D
- Weight: 0.2kg



Dimensions



www.yli.cn

We create security